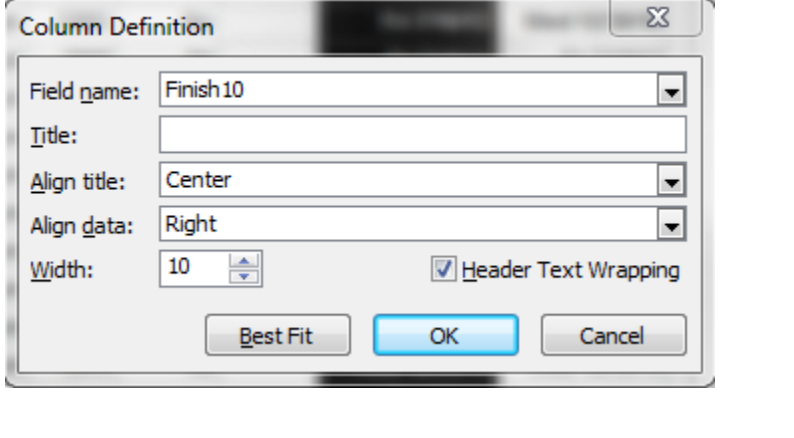
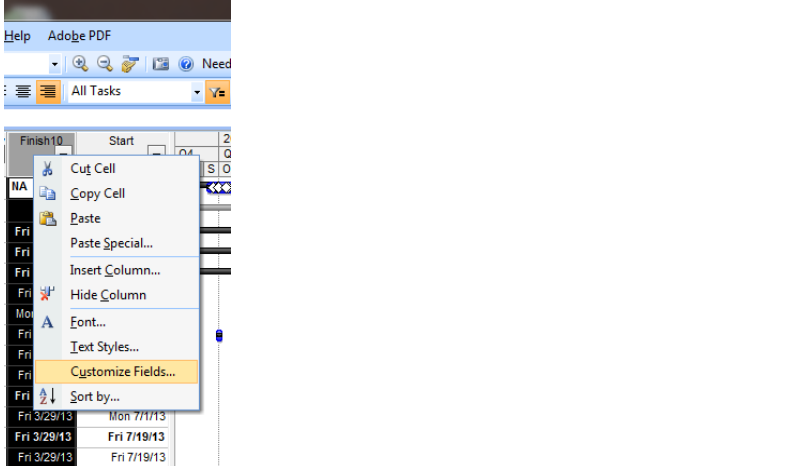
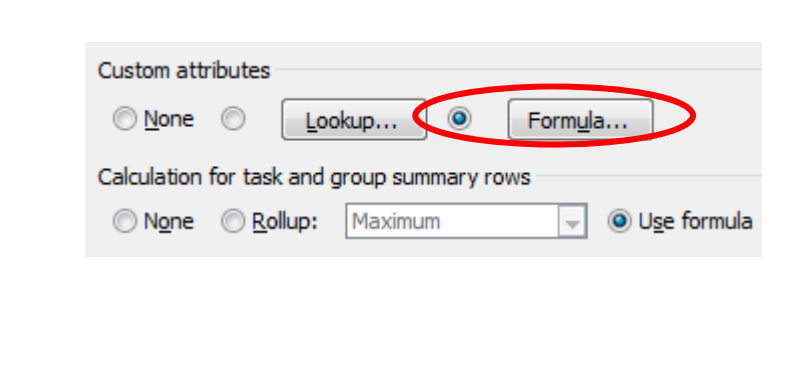


Calculating Summary Bar Progress

Description

When the majority of tasks within a Summary Task are only Milestones, it appears that MS Project does not calculate the Percent Complete correctly, since Milestones are a 0/100 type Earned Value Task. The following method will allow you to calculate the Percent Complete in a Summary Bar.

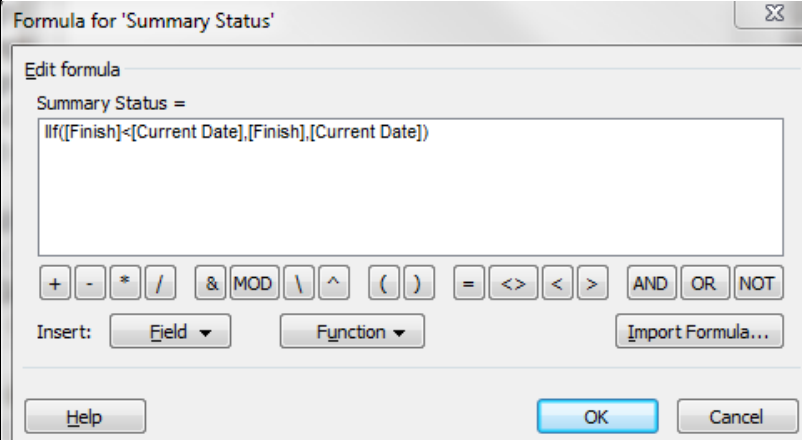
<p>1. Right click in an MS Project column and choose Insert Column. Scroll down in the Field Name and choose Finish 10. Click OK.</p>	
<p>2. Right Click on Finish 10 Column and choose Customize Fields. Select the Rename radio button and call your Field Summary Status.</p>	
<p>3. Next under Custom Attributes, choose the Formula radio button.</p>	

Calculating Summary Bar Progress

4. Insert the following formula:
IIf([Finish]<[Current Date],[Finish],[Current Date])

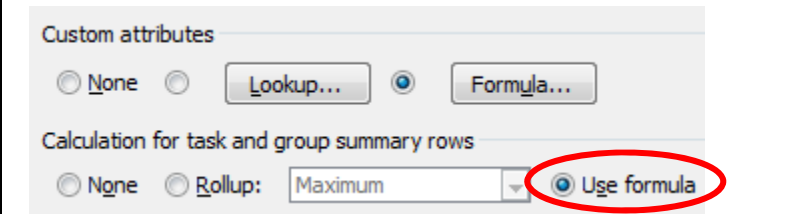
Click **OK**

*Note: If you wish to show the Status Date, rather than the Current Date, insert **Status Date** into the formula.*



5. Next Under **Calculation for task and group summary rows**, select the **Use Formula** radio button.

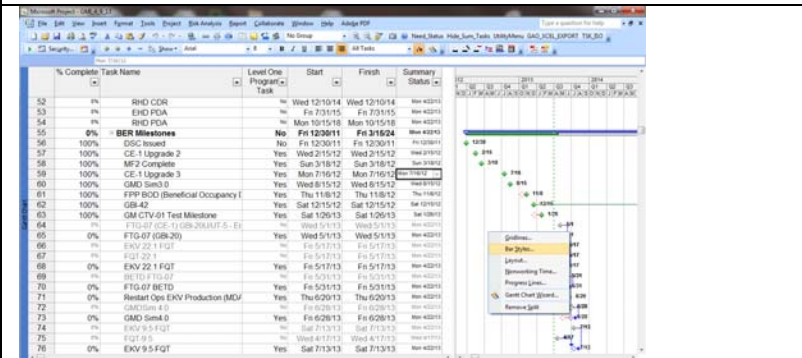
Click **OK**.



6. Now the **Summary Status** field either shows the Finish Date for the Milestone (if complete) or the Current Date if not complete.

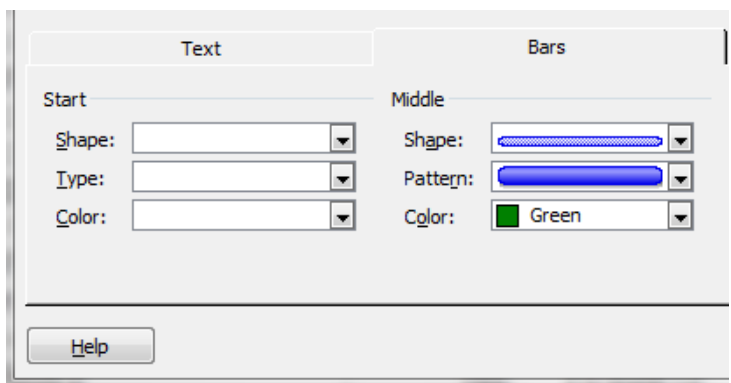
Task Name	% Complete	Summary Status
GMI_IMS	99%	Fri 3/29/13
GMI_IMS_4_9_13	99%	Fri 3/29/13
Level One Addendum Tasks	99%	Fri 3/29/13
BER Milestones	0%	Fri 3/29/13
DSC Issued	100%	Fri 12/30/11
CE-1 Upgrade 2	100%	Wed 2/15/12
MF2 Complete	100%	Sun 3/18/12
CE-1 Upgrade 3	100%	Mon 7/16/12
GMD Sim3.0	100%	Wed 8/15/12
FPP BOD (Beneficial Occupancy Date)	100%	Thu 11/8/12
GBI-42	100%	Sat 12/15/12
GM CTV-01 Test Milestone	100%	Sat 1/26/13
FTG-07 (GBI-20)	0%	Fri 3/29/13
EKV 22.1 FQT	0%	Fri 3/29/13
FTG-07 BETD	0%	Fri 3/29/13
Restart Ops EKV Production (MDA Milestone)	0%	Fri 3/29/13

7. For the calculation to show up graphically, we need to Customize the Bar Styles. Right-Click on the Gantt Chart side and select **Bar Styles**



Calculating Summary Bar Progress

8. Insert a row called **Summary Progress**.
Click in the **Appearance** Field and match the Bar Style and color to the right:



9. In the **Show for...Tasks** Field choose: **Summary**, in the **From** field choose: **Actual Start** and in the **To field** choose **Summary Status**.
Note: Schedule needs to be properly stasured to show Bar Style tracking.

Bar Styles

Cut Row Paste Row Insert Row

Name	Appearance	Show For ... Tasks	Row	From	To
Summary		Summary	1	Baseline Start	Baseline Finish
Summary Task		Summary	1	Start	Finish
Summary Progress		Summary	1	Actual Start	Summary Status
Project Summary		Project Summary	1	Start	Finish
*Rolled Up Task		Normal,Rolled Up,Not Summary	1	Start	Finish
*Rolled Up Progress		Normal,Rolled Up,Not Summary	1	Actual Start	CompleteThrough

10. Now the Summary Bar will calculate your Milestone Progress up through Time Now or Status Date .

